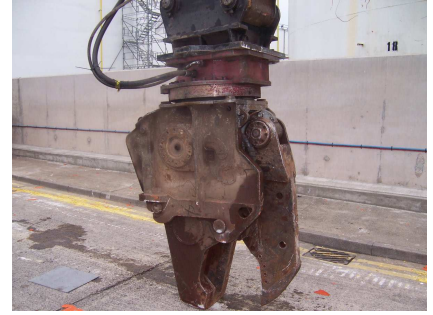


# CASE STUDY: Fuel Storage & Distribution Terminals

## Project scope:

The dismantling via mechanical cold cut shear techniques of a redundant fuel (leaded & un-leaded petroleum) storage tank located within an operational tank farm.



## Project Assessment:

A full assessment was undertaken of the project, site and project specific Risk Assessments were carried out. The development of site and project specific Method Statements and a Construction Phase Safety Plan, allowing and maintaining full compliance with statutory regulation.



Special attention was placed on the issues of live feed lines within close proximity to the project.

The terminal was to remain operational during the entire project, receiving product via pipeline and super-tanker, loading and distributing product via road-tanker.



## Client - Contractor Communication:

Daily meetings were held at all levels, ranging from Management Safety Meetings to toolbox talks with the site operatives to ensure that an adequate flow of essential information was provided. This ensured that the highest Health, Safety, Environmental and Quality standards were maintained.



## Outcome:

Validation of the projects compliance to SHE Legislation was essential for the future development of site.

All relevant information required by the CDM Coordinator was efficiently supplied allowing the completion of the Health & Safety File (including full traceability of all materials arising).

