

CASE STUDY: SHIP BREAKING

Project Summary - The diminishing Fishing Industry in the UK has resulted in ships being berthed on docks with costs building. Eventually, the amount owed cannot be settled and the boat is towed to a facility licenced to scrap these vessels.

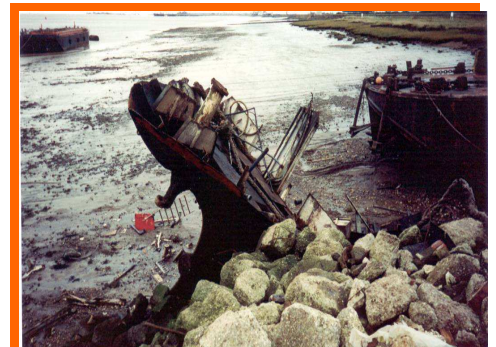
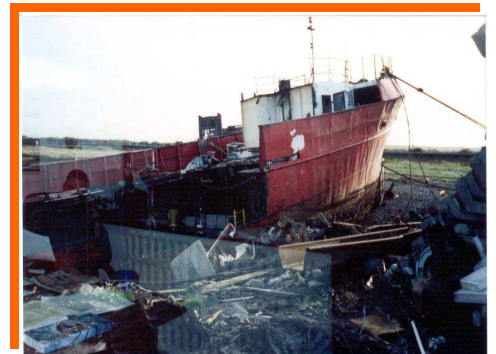
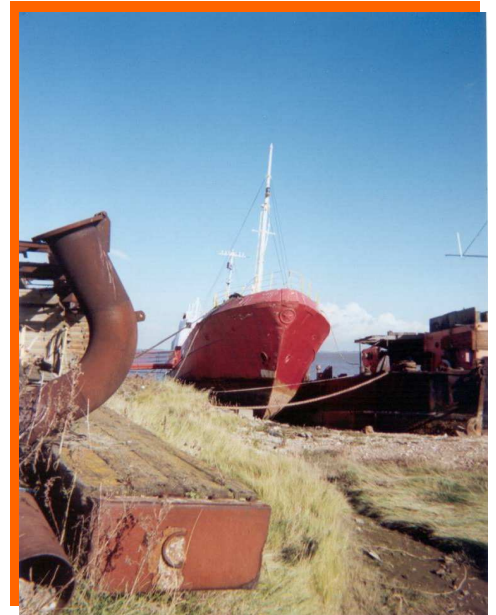
Action taken:

Internal survey undertaken to ascertain the contents of the ship (credits and debits), which ranged from asbestos insulation, to a good engine and gearbox. Thus, the scrapping of the boats balanced out the credits with the debits.

Removal of all potential Health and Environmental risks to licenced off site facilities.

Hot cutting of the vessel to a size suitable for lifting to dry land for further processing, using all relevant Health & Safety practices.

Shoreline and all other areas left free of any debris relating to this boat.



BDB Dismantling Limited

Valley Road, Station Road Industrial Estate, Wombwell, Barnsley, S73 0BS

Phone: 01226 273860 Fax: 01226 754180 E-mail: marketing@bdbdismantling.co.uk